



2024 ANNUAL REPORT

*Building equitable communities
that alleviate poverty*

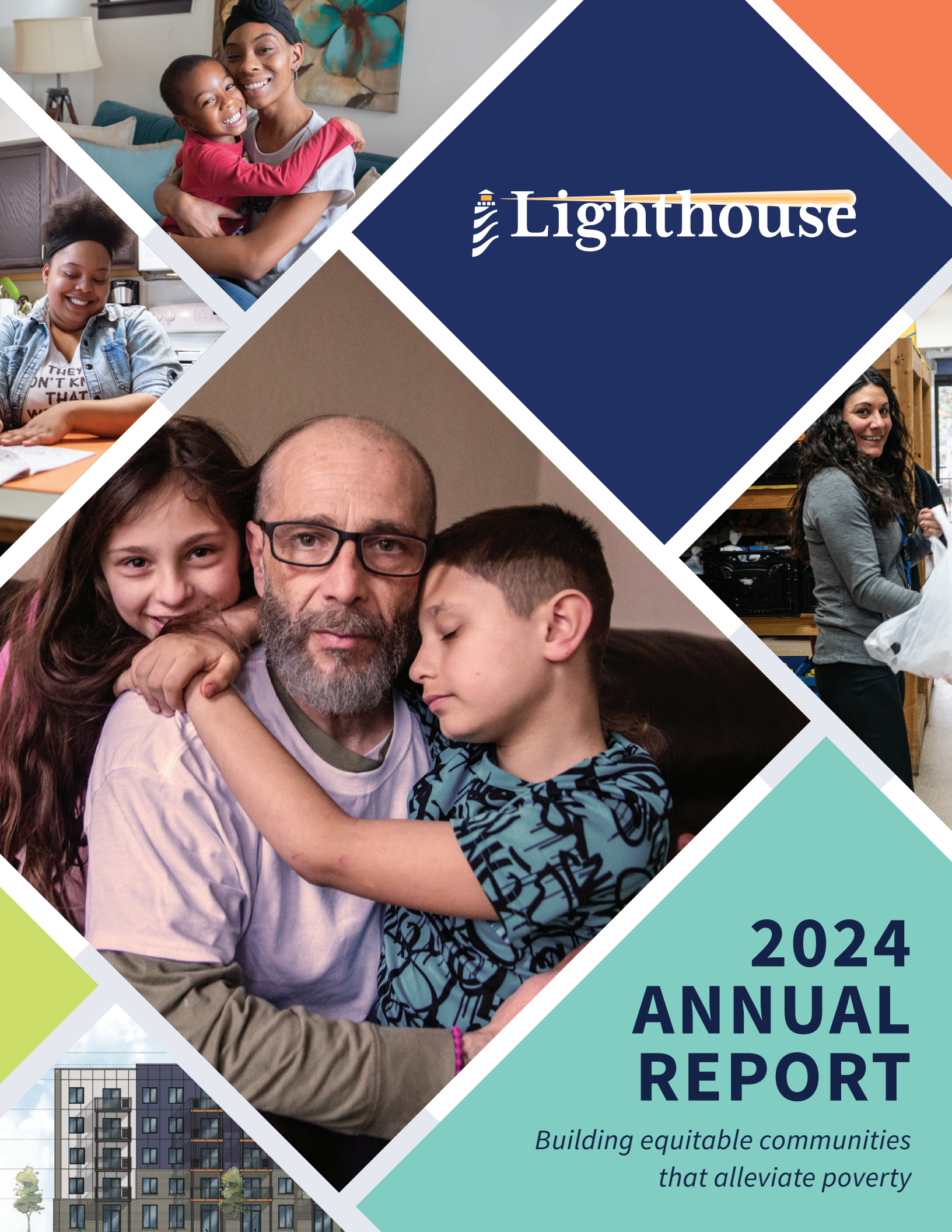


TABLE OF CONTENTS

| | |
|----|--|
| 03 | A Message from our President & Board Chair |
| 04 | Honoring 40 Years of South Oakland Shelter <i>A legacy of compassion and innovation</i> |
| 06 | Our Programs at Work <i>From emergency food deliveries to permanent housing, Lighthouse provides a continuum of care</i> |
| 10 | Lighting The Way <i>A campaign to expand our impact</i> |
| 14 | Mission Possible <i>Events that made a difference in 2024</i> |
| 16 | Financials |
| 17 | Congregation Partners |
| 18 | Our Supporters |

BOARD OF DIRECTORS

Thank you to the Board of Directors for their leadership, guidance, and commitment to Lighthouse’s mission.

Board Leadership

| | |
|--|---------------------------------------|
| Jackie Buchanan <i>Chair</i> | Dr. Jacqui Spicer <i>Treasurer</i> |
| Jonathan Burleigh <i>Vice Chair</i> | Richard Lewnau <i>Past Chair</i> |
| James Campbell <i>Secretary</i> | |

| | |
|---------------------|------------------|
| Dr. Dennis Blender | Scott Stewart |
| Patty Corkery | Susan Wellman |
| Sommer Dawson | |
| Maurice Edwards | EMERITUS |
| Dr. Chanel Hampton | Jim Cirolì |
| Dr. Bryan Kieler | Susan Cooper |
| Dr. Bill Solomonson | Dr. Harry Maisel |

Executive Leadership

| | |
|---|---|
| Ryan Hertz, MSW <i>President & CEO</i> | Dr. Rita Fields <i>Chief Talent & Strategy Officer</i> |
| Kris Bishop <i>Chief Financial Officer</i> | Jenny Poma, MSW <i>Chief Operating Officer</i> |
| Todd Burk <i>Chief Real Estate & Community Development Officer</i> | Mary Riegle <i>Chief Philanthropy Officer</i> |

A MESSAGE FROM OUR PRESIDENT & BOARD CHAIR

Dear Lighthouse community members,

As we reflect on the profound impact Lighthouse has made in 2024, we are filled with gratitude. Your unwavering support has empowered us to meet urgent needs — providing food, emergency shelter, and vital resources to thousands of adults, children, and families. Together, we have not only addressed immediate challenges but also laid the groundwork for lasting change.

A highlight of this year has been the continued leadership and growth of our Runaway and Homeless Youth programs. We've provided safe shelter, compassionate care, and a path toward stability for displaced young people. For these unaccompanied youth, our services have been a lifeline — a place of hope when they needed it most.

2024 also marked a pivotal moment for the Lighthouse Campus in Pontiac — the planned redevelopment of our headquarters into a comprehensive hub for community support. Once completed, the Campus will offer:

- 159 non-congregate emergency shelter beds for families
- A client-choice social supermarket for dignified access to food
- An Economic Opportunity Center for job training and income supports
- On-site supportive services for wide-ranging community needs
- A vibrant indoor/outdoor venue and café to foster connection and engagement
- Partnering organizations providing medical, dental, behavioral health, and workforce services

We remain steadfast in addressing a key root cause of poverty — the deepening lack of housing affordability. Since the 2019 merger of South Oakland Shelter and Lighthouse of Oakland County, we have focused on expanding affordable housing. In the past 18 months, we've laid the groundwork for over \$150 million in transformative developments.

Among them is the historic Lee Plaza redevelopment in Detroit. In partnership with others, we're revitalizing this long-vacant landmark into deeply affordable housing for older adults — honoring its legacy while addressing urgent regional needs. We're also advancing additional housing projects across Southeast Michigan, each one moving us toward a future where every family can access safe, stable, affordable housing.

These developments represent more than buildings — they reflect our vision for a more equitable and hopeful future for all. Every milestone is a testament to the dedication of our staff, volunteers, partners, and supporters — people like you. Together, we are building a community where hope, dignity, and opportunity are within reach for everyone.

Thank you for believing in our mission and making such a meaningful impact.



Ryan Hertz
Ryan Hertz
President and CEO



Jackie Buchanan
Jackie Buchanan
Chair, Board of Directors



HONORING 40 YEARS OF SOUTH OAKLAND SHELTER

A Legacy of Compassion and Innovation

From Rotating Shelter to Regional Leader

Founded in 1985, South Oakland Shelter (SOS) began as a grassroots effort to provide emergency shelter for individuals and families experiencing homelessness in Oakland County. Through a unique rotating shelter model, SOS partnered with 67 local congregations, offering guests overnight accommodations, meals, transportation, and a welcoming community.

Over the decades, SOS evolved into a comprehensive service provider, expanding its offerings to include housing assistance, case management, and support services focused on long-term stability. In 2008, SOS launched the Follow-up Care program, providing departing clients with ongoing support — including individualized case management, life skills training, and mentoring — to help prevent returns to homelessness.

Recognizing the lack of affordable housing as the leading cause of homelessness, SOS initiated the development of Coolidge Place, a 64-unit affordable apartment and townhome complex in Oak Park. The project broke ground in 2019 during early merger discussions and ultimately opened under Lighthouse's leadership.

A Strategic Merger to Amplify Impact

In 2019, SOS merged with Lighthouse of Oakland County to form Lighthouse MI, combining over 75 years of experience in fighting poverty and homelessness. The merger strengthened the organization's ability to provide holistic services and to address the root causes of economic instability across Southeast Michigan — especially the critical shortage of affordable housing.

When the COVID-19 pandemic struck, Lighthouse pivoted quickly to meet urgent community needs. Thanks to deep roots and trusted relationships built by both organizations, Lighthouse was able to rapidly mobilize resources and expand services to respond to the unprecedented demand for shelter and food assistance.

1972

LIGHTHOUSE ESTABLISHED

Lighthouse of Oakland County founded by four families and operated out of the back of a Pontiac parish providing food and clothing.

1985

SOS FOUNDED

South Oakland Shelter founded by seven interfaith congregations - expanded to 19 within a year - providing emergency shelter.

1974

THE SANCTUARY OPENS

Residential shelter begins for runaway and homeless youth (ages 10–17).



Lessons Learned and Future Directions

Reflecting on four decades of service, key lessons emerge from the legacy of SOS:

- ▶ **Community Engagement is Foundational**
The success of the rotating shelter model underscores the power of collective community action.
- ▶ **Openness to Change Strengthens Services**
Together with community partners, including partner service providers and our congregations, we recognized differing needs and shifted to focus on families with children—helping shape a more responsive model of care.
- ▶ **Holistic Support is Essential**
Providing wraparound services such as case management and life skills education helps individuals maintain stable housing and avoid repeat episodes of homelessness.
- ▶ **Strategic Partnerships Multiply Impact**
The merger with Lighthouse demonstrates how collaboration can lead to more effective, scalable solutions.

Looking ahead, Lighthouse MI is committed to honoring SOS's legacy by continuing to expand services, deepen partnerships, and innovate to meet the evolving needs of vulnerable individuals and families.

40 YEARS

From its humble beginnings to its evolution into a regional leader in the fight against homelessness, SOS has left a lasting impact on thousands of lives

Celebrating a Legacy of Service

As we commemorate the 40th anniversary of South Oakland Shelter, we honor an enduring commitment to dignity, compassion, and community.

To the congregations, volunteers, staff, and supporters who have walked alongside SOS through the decades: thank you. Your dedication has built a legacy of hope. **Together, we will continue lighting the way forward for our neighbors in need.**

2008

SOS EXPANDS CARE

Launch of Follow-up Care program with case management and life-skills services.

2023

YOUTH PROGRAMS TRANSFER

Lighthouse MI assumes management and operations of the Sanctuary Runaway & Homeless Youth Programs.

2019

LIGHTHOUSE + SOS MERGE

Two regional leaders unite to form Lighthouse MI.

OUR PROGRAMS AT WORK

From emergency food deliveries to permanent housing, Lighthouse provides wraparound programming





Systems Change
& Advocacy



Community
Development



Other Essential
Services



Follow-up
Care & Stability
Services



Housing &
Financial
Stability



Runaway &
Homeless
Youth Services



Emergency
Shelter



Food Programs



LONG-TERM SOLUTIONS

Building a Better Future



Our Programs at Work

EMERGENCY SERVICES

Immediate Needs



CHAMPIONED MEDICAL DEBT RELIEF WITH COMMUNITY PARTNERS

► Systems Change & Advocacy

Fighting for long-term solutions to poverty through policy, partnerships, and public engagement



► Community Development

Creating opportunities to end the cycle of poverty and homelessness through the development of affordable housing



► Stability Services

Ongoing coaching, follow up case management, rental assistance, and economic empowerment to maintain long-term housing and independence.



► Emergency Shelter

Rapid response food, shelter, and crisis support for individuals and families facing immediate need.



24,036 NIGHTS OF SHELTER TO 403 INDIVIDUALS IN 2024



360 EVICTIONS PREVENTED



IN 2024, LIGHTHOUSE TOOK SIGNIFICANT STEPS TO INCREASE AND DEVELOP AFFORDABLE HOUSING IN THE REGION, INCLUDING

Auburn Place

A new, five story, 54-unit affordable housing development in Pontiac

Beacon Square and Townhomes

Redeveloping 40 units to make them more efficient

Lee Plaza

Lighthouse's first development in Detroit will add 117 units for adults 55+



212 FAMILIES ASSISTED IN ACCESSING INCOME AND BENEFITS SERVICES



93% SUCCESSFULLY TRANSITIONED FROM SHELTER TO HOUSING



290 INDIVIDUALS TRANSITIONED INTO STABLE HOUSING

"They helped me emotionally and psychologically. They helped me physically by giving me a place to live and clothes to wear, food to eat. They helped in showing me how to get through the system and find a way. They pulled me from a situation that was destroying me and said 'You can do this!'"

PRISCILLA



"I'm learning that if I apply myself, I can do it. I put myself on the back shelf for too long, and I'm learning to take care of me and know who I am."

SARAH

► Food Programs

Emergency food pantries and home deliveries across Oakland County to fight hunger.



150,643 FOOD BOXES DISTRIBUTED

► Runaway & Homeless Youth Services

Emergency shelter, street outreach, case management, family reunification support



116 YOUTH SERVED



LIGHTING THE WAY

A Campaign to Expand Our Impact

Lighthouse has always responded boldly to community needs. Now, through the Lighting the Way Campaign, we are taking our most significant step yet: expanding our physical campus to help more people, more effectively than ever before.

Building for the Future

At the center of the campaign is the creation of a new Lighthouse Campus in Pontiac — a unified hub that brings together our emergency shelter, food distribution, employment and supportive services in one accessible location.

This is not just a construction project. It's a transformation in how we serve our neighbors:



159 non-congregate shelter beds for families, offering safety, dignity, and privacy



A client-choice social supermarket, where people can select free, fresh, healthy food with autonomy and respect



An Economic Opportunity Center with employment support, GED programs, digital literacy, and financial resources



Flexible spaces for community programs and service partners to meet people where they are

By unifying services and expanding our space, we can reach more people in crisis — and provide the tools they need to build stable, independent futures.

Early Supporters

With \$15M raised towards our *Lighting the Way* goal of \$40M, Lighthouse is able to break ground on the first phase of the campus redevelopment in September 2025.

Thank you to our lead supporters:

► \$1,000,000+

- The Carls Foundation
- Erica and Jeff Lawson
- Michigan State Housing Development Authority
- McGregor Fund
- Oakland County

► \$100,000 - \$999,999

- Genisys Credit Union
- Michigan Department of Health and Human Services
- MSUFCU Desk Drawer Foundation
- Pontiac Funders Collaborative
- Wana Brands Foundation

► \$25,000 - \$99,000

- Aptiv Foundation
- James and Cathy Campbell
- Jennifer and Christopher Granger
- Richard F. and Carol A. Lewnau
- Lawrence and Jeanette Murphy
- Brent and Heather Wege

Be Part of the Impact

Lighting the Way is not just about bricks and mortar — it's about people. It's about families getting back on their feet, children having a safe place to sleep, and neighbors gaining the tools to thrive.

We invite you to learn more, get involved, and **help us light the way toward a more stable, equitable future.**



Visit lighthousemi.org/lightingtheway to explore the campaign

Looking Ahead – Affordable Housing Beyond the Campus

While the *Lighting the Way* campaign focuses on expanding Lighthouse's physical campus in Pontiac, our broader vision includes major investments in affordable housing across Southeast Michigan. Projects like Lee Plaza in Detroit, as well as Auburn Place and Beacon Place in Pontiac, are part of this long-term commitment, supported through distinct funding streams separate from the current campaign. These developments will provide high-quality, affordable housing with on-site supportive services for families, seniors, and individuals transitioning from homelessness — reinforcing our mission to create stable, thriving communities.



*With Community,
For Community —
A Year of
Impact*

MISSION POSSIBLE

*Events That Made
a Difference in 2024*

Rent Party 2024

Lighthouse's Rent Party provides an unforgettable evening of music and community every spring. Inspired by the rent party tradition of the 1920s — a grassroots solution to prevent eviction that also fueled the rise of jazz and blues — this event blends history, music, and purpose.

The 8th annual Rent Party honored that spirit by raising funds to prevent eviction and promote housing stability for families across Southeast Michigan.



SAVE THE DATE

*10th annual Rent Party on
Thursday, May 7, 2026 at
The Treasury in the heart of
downtown Pontiac.*

Annual Meeting & Awards

At the 2024 Annual Meeting, held in September, Lighthouse celebrated community champions whose dedication fuels our mission. Honorees included outstanding volunteers, partners, and civic leaders who have gone above and beyond to support housing stability and human dignity.



2024 ANNUAL AWARDEES

Volunteer of the Year
Mark Goldman

Outstanding Service Award
Richard Lewnau

Mission Possible Award
Colleen Ochoa Peters

Community Partner Award
Alliance for Housing

Congregation Partner Award
Congregational Church of Birmingham

Corporate Partner of the Year
Flagstar Bank

Governmental Partner Award
MDHHS – Housing & Homeless Services Division

Foundation Partner Award
MSUCU Desk Drawer Foundation

*More than \$40,000
raised and 4,000 pounds
of food collected*



Great Thanksgiving Food Fight

Since Lighthouse launched this spirited competition among local law firms, the Great Thanksgiving Food Fight has raised over \$40,000 and collected more than 4,000 pounds of food. Funds ensure that food boxes are balanced and include fresh ingredients like produce, dairy, and protein. In 2025, Lighthouse will expand the competition to welcome everyone!

Email contact@lighthousemi.org to learn more about how you can elevate the fight against food insecurity.

Holidays Unwrapped

Last year, Lighthouse introduced Holidays Unwrapped — a client-centered approach to address wants and needs during the holidays. Rooted in respect, dignity and empowerment, this program provides essential household items that are crucial for individuals and families as they transition to independence. The Lighthouse community generously provided household essentials, gift cards, stuffed stockings, food and gifts to help 200 families.

It's never too early to get involved! Email contact@lighthousemi.org today to make the holidays brighter.

*200 families helped by
providing household
essentials, gift cards, stuffed
stockings, food and gifts*





VOLUNTEERISM AND COMMUNITY PARTNERSHIPS

*Stories of Generosity,
Service, and Shared Purpose*



VOLUNTEER SPOTLIGHT

Sylvia Velasquez

Sylvia began volunteering with Lighthouse after retiring, drawn in by a family food sort in 2020. What started as helping at the warehouse led her to the Pantry, where she now answers phones and connects directly with clients.

“Every day there was something different... it kept you busy. Speaking with clients has been an eye opener... Most are humble and grateful.”

Volunteering, she says, lets her carry on her parents’ legacy: “They never failed to give back. Volunteering at the Pantry gives me the chance to continue their commitment to community.”

POWERED BY COMMUNITY

Every program, every milestone, and every life changed is made possible by you — our community of hundreds of supporters, volunteers, and partners. Thank you for lighting the way forward.





11,030 hours
of service

2,996 volunteer
shifts filled

DONOR SPOTLIGHT

Brent and Heather Wege

Brent and Heather Wege began their journey with Lighthouse over a decade ago, first supporting South Oakland Shelter before its merger. Their shared commitment stems from a desire to uplift neighbors in need and invest in lasting community change.

“Supporting Lighthouse means breaking the cycle of poverty,” they explain, “helping others gain the foundation they need with housing, food security, and a stable base from which to rebuild.”

For Brent and Heather, the most meaningful impact comes from seeing short-term help evolve into long-term stability. Their time with Lighthouse has deepened their belief that meaningful change starts locally—and grows through collaboration.

“To anyone considering getting involved,” they say, “just remember: we all need a lighthouse sometimes, and we all have the capacity to be one.”



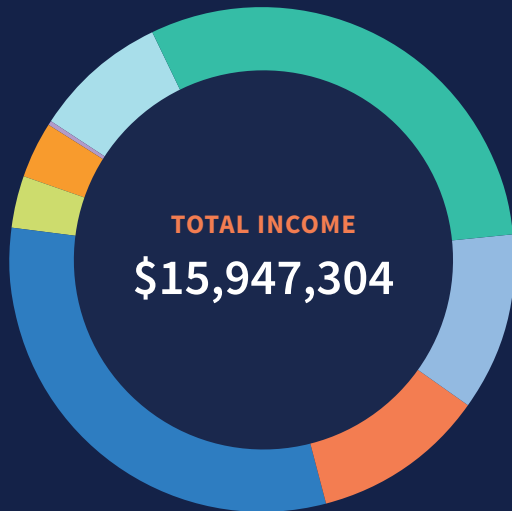
“Lighthouse
has shown us that real
change is local and collaborative,
and that everyone can contribute
in some way to furthering
the mission.”

**BRENT AND
HEATHER
WEGE**

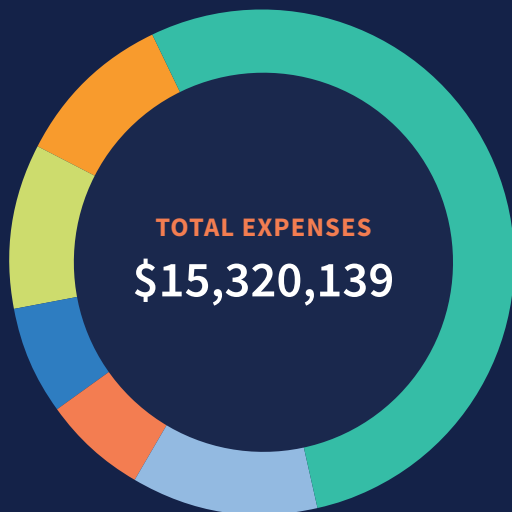


2023-2024 FINANCIALS

Income, Expenses, Assets and Liabilities



- **Government**
\$4,906,268 (30.8%)
- **Contributions**
\$1,825,160 (11.4%)
- **Foundations**
\$1,739,603 (10.9%)
- **Donated Goods & Services**
\$4,994,131 (31.3%)
- **Special Events**
\$511,120 (3.2%)
- **Rental Income**
\$584,756 (3.7%)
- **Developer Fee**
\$22,909 (0.1%)
- **Investment & Other Income**
\$1,363,357 (8.5%)



- **Emergency Services**
\$8,215,595 (53.6%)
- **Stability Services**
\$1,849,224 (12.1%)
- **Housing and Community Development**
\$1,016,743 (6.6%)
- **Runaway Homeless Youth**
\$1,073,050 (7%)
- **Management & General**
\$1,604,799 (10.5%)
- **Fundraising**
\$1,560,728 (10.2%)

TOTAL ASSETS

\$17,990,974

TOTAL LIABILITIES

\$1,577,966

TOTAL NET ASSETS

\$16,413,008





Mission & Mingle

Mission & Mingle is Lighthouse's newest tradition, created by merging the Annual Meeting and Volunteer Appreciation events into one memorable evening!

This event brings together volunteers, donors, board members, and staff for an inspiring evening of community and celebration.

The event will include an award ceremony to recognize outstanding volunteers and community partners. Attendees will also hear updates on our Lighting the Way campaign and affordable housing developments, including Lighthouse's first development in Detroit!



Tuesday, September 30, 2025
5 - 7 pm



Michigan State University
Management Education Center



Register for
Mission & Mingle
today

Volunteers Make It Possible

Every day, Lighthouse relies on the dedication of volunteers to help meet urgent needs in our community. From distributing food at our pantries to stocking shelves and sorting donations, volunteers play a vital role in creating a welcoming and dignified experience for those we serve.

Lighthouse also offers a variety of one-time and seasonal volunteer opportunities throughout the year, including special events and group service days. Whether you're an individual, part of a family, a faith group, or a corporate team, there's a meaningful way for you to get involved.

Whether you can lend a hand once or once a week, we appreciate your help in advance.



Explore opportunities
and sign up at
volunteer.lighthousemi.org
or scan the QR Code





CONGREGATION PARTNERS

Partners in Compassion, Anchored in Community

Congregations have been the heart and soul of our organization since the beginning. From hosting food distributions, preparing meals at our emergency shelter, organizing donation drives, or offering ongoing support, these faith communities embody compassion in action. We are deeply grateful for their unwavering dedication to building a more just and equitable community.



Shelter to Stewardship: A Congregation's Final Gift for the Future

Drayton Avenue Presbyterian Church leaves behind a profound legacy of faith in action.

As one of the earliest congregations to join the South Oakland Shelter network, they served for over two decades—offering shelter, meals, leadership, and care to neighbors in need.

As the congregation prepared for its dissolution, they chose to ensure their impact would carry forward by making a \$20,000 gift to the Lighting the Way capital campaign. This final act of generosity reflects the heart of their mission: serving others with dignity and love.

Drayton Avenue Presbyterian's legacy lives on in the thousands of lives they uplifted and through their investment into Lighthouse's campus expansion and future service.

Adat Shalom Synagogue
Antioch Lutheran Church
Beautiful Savior Lutheran Church
Berkley First: A United Methodist Church
Big Beaver United Methodist Church
Birmingham First: A United Methodist Church
Birmingham Unitarian Church
Calvary Evangelical Lutheran Church
Christ Church Cranbrook
Christ Evangelical Lutheran Church
Christ The Redeemer Catholic Church
Church of the Resurrection
Clarkston Community Church
Clawson United Methodist Church
Community Presbyterian Church
Congregation Beth Ahm
Congregation Shir Tikvah
Congregational Church of Birmingham
Drayton Avenue Presbyterian
First United Methodist Church of Birmingham
First United Methodist Church of Troy
First United Methodist Church of Waterford
First Presbyterian Church of Birmingham
First Presbyterian Church of Farmington



In October 2024, Lighthouse expanded its partnership with **Calvary Evangelical Lutheran Church** in Clarkston by relocating its food pantry to the church. This move has strengthened our ability to provide emergency food assistance while continuing to meet the needs of the local community. Like our longstanding partnership with **St. David's Episcopal Church** in Southfield, this collaboration reflects the power of working alongside community-based partners to create meaningful impact. We are grateful to the generous donors in the Clarkston area who have supported our work for so many years through ongoing food donations and steadfast commitment.

First Presbyterian Church of Royal Oak
First Spiritual Temple of Royal Oak
Holy Spirit Lutheran Church
Hope Lutheran Church
Hope United Methodist Church
Islamic Association of Greater Detroit
Kirk in the Hills
Life Renewal Church
Lutheran Church of the Redeemer
Meadowbrook Christian Church
Milford Presbyterian Church
Mitcham Chapel AME Church
National Shrine of the Little Flower Parish
Nativity Episcopal Church
Northminster Presbyterian Church
Orchard Lake Community Church, Presbyterian
Orchard United Methodist Church
Our Lady of the Lakes Church
Our Lady of Refuge
Pilgrim Congregational Church
Renaissance Vineyard Church
Sanctuary of Birmingham
Servants Entrance Community
St. Daniel Catholic Church
St. David's Episcopal Church

St. Elizabeth Ann Seton Catholic Church
St. George Ladies Philoptochos Society
St. James Episcopal Church
St. John's Episcopal Church
St. Mary Our Lady of the Snows
St. Mary's In the Hills Episcopal Church
St. Paul's United Methodist Church
St. Philip's Episcopal Church
St. Regis Catholic Church
St. Stephen's Episcopal Church
Temple Israel
Temple Kol Ami
The Muslim Unity Center - Bloomfield Hills
Trinity Episcopal Church
Troy United Methodist Church
Unity of Royal Oak
Woodside Bible Church - Rochester

From the earliest days of rotating shelter, to launching our satellite food pantries, supporting continued expanded services., our congregation partners have played a vital role in supporting neighbors in crisis.



OUR SUPPORTERS

GIVING LEVEL

\$500,000+

Alliance for Housing
Oakland County

Erica and Jeff Lawson

McGregor Fund

U.S. Department of Housing and
Urban Development

GIVING LEVEL

**\$100,000 -
\$499,999**

MSUFCU Desk Drawer Foundation

NeighborWorks America

Oakland County

Salvation Army, Eastern Michigan
Division

State of Michigan

United Way for Southeastern Michigan

Wana Brands Foundation

GIVING LEVEL

**\$50,000 -
\$99,999**

Amazon

Community Foundation for Southeast
Michigan

Flagstar Bank

Huntington National Bank

Patricia L. Kelly

Karen MacLeod

Vera and Joseph Dresner Foundation

GIVING LEVEL

**\$25,000 -
\$49,999**

Bank of America Foundation
CN

Common Ground Sanctuary

Henry and Emily Ford III

Forgotten Harvest

The Jewish Fund

Robert and Heather Johncox

Richard F. and Carol A. Lewnau

Magna International

Larry and Jeanette Murphy

Judith Ann Samuel

The Nicholas Martin Jr. Family
Foundation

Vibe Credit Union

The Young Foundation

GIVING LEVEL

**\$10,000 -
\$24,999**

Aptiv Foundation

Blue Cross Blue Shield of Michigan
Foundation

Jackie Buchanan

James and Cathy Campbell

Intercontinental Exchange, Inc.

Jeffrey A. Ishbia

Clannad Foundation

Comerica Charitable Foundation

Rosalie Deveson

Dominion Real Estate Advisors

The Donald R. and Esther Simon
Foundation

Drayton Avenue Presbyterian Church

DTE Foundation

FEMA

Fifth Third Bank

Gardner-White Furniture

General Motors Corporation

Nick George

Jeffrey Hastedt

Linda Hildebrand

The June and Cecil McDole
Foundation

The Kroger Foundation

Loomis, Sayles & Company

Marjory and Donald Epstein Family
Charitable Foundation

The Marshall Mathers Foundation

Meijer

Michigan Department of Health and
Human Services

William and Marie Molnar Family
Foundation

Oakland Livingston Human Service
Agency



PNC Bank
Richard and Doris Beneicke
Foundation
The Roxbury Group LLC
Senior Men's Club of Birmingham
Shared Mission Foundation
St. Paul United Methodist Church
The TJX Foundation
Van Horn Concrete
Brent and Heather Wege
Williams International

GIVING LEVEL

\$5,000 - \$9,999

AmeriHealth Caritas Services LLC
Anna Jo Agency, LLC
Arts, Beats & Eats Foundation
Ascension Michigan
Carolyn and James Bellinson
The Jacob Best Foundation
Roger and Joann Bonahoom
Blue Cross Complete
BorgWarner Foundation
Builders FirstSource
Jonathan and Dana Burleigh
Richard and Carol Clark
Robert and Candice Cruz
CSO, Inc.
Ethos Development Partners
Faircom New York
First Presbyterian Church of
Birmingham
Genisys Credit Union
Jennifer and Christopher Granger
Elizabeth and Michael Hubbard
Integrated Inventory Solutions
John D. and Jean E. Dinan Foundation
Lake Trust Credit Union
James and Jeanine Lambrecht
Deanna LaMotte
John Lychuk
M G D J Giving
James and Karen Martin
Mark and Ann McGowan
Karen Mroczka

Victor and Ronda Norris
O'Brien Construction
Janet E. Peceny
Rochelle & Randolph Forester
Foundation
Janice Ross
Salesforce
Annette and Eric Sargent
John Schulte
Robert Shureb
Hanne Skaarup
The State Bank
Christopher Stoddard Gift Fund
The Sam Williams Foundation
United Way of Metropolitan Dallas
David Vivio
Denise Warren
Gregg and Cynthia Williams
Richard Wojtylo
Colton Zimmer
Karl J. Zimmermann

GIVING LEVEL

\$2,500 - \$4,999

54 Sound Studios
Marc L Bagley and Hyla Williams
Baker College
Thomas Basile
Bernard Wealth Management
Birmingham Unitarian Church
Nancy Bissell
Richard Blumenstein
Rebecca Buffa
Joan and Charles Burleigh
The Butzel Long Charitable Trust
Stephen and Mary Card
Michael A. Clement
Community Foundation of Greater
Rochester
Congregational Church of
Birmingham
Susan Cooper
Linda and Stephen Czerniak
Lisa and Dana Day
Design Research Engineering

Marjorie and Henry DiLaura
Entech Staffing Services
Equitable Advisors
Fred A. and Barbara M. Erb Family
Foundation
Farbman Group
Financial One
First Presbyterian Church of
Farmington
First Presbyterian Church of Royal
Oak
Timothy Fisk and Kristen Smallwood
Dian and Charles Flynn
David and Carla Forst
Fusco, Shaffer & Pappas, Inc.
Nicholas George
Lawrence and Doris Gillick
Lawrence and Kathleen Goss
William and Kathy Haefner
Joe Heaphy and Anne Osmer
Nicklas and Gretchen Hebekeuser
Howard and Wendy Hertz
Janet and Kirk Hewlett
Hodges Subaru
Honorable Order of the Blue Goose
Intl
Megan Iaccino
Isabel F. Smith and Ralph L. Smith
Foundation
Hollis and Karen Jencks
JMB Financial Services Group, LLC
Carol and Richard Johnston
Ian Kaferle
John Keegan
Loretta Kennedy
Kotz Heating & Air Conditioning, Inc.
Dana Locniskar and Christine Beck
Lynch & Sons Funeral Directors
M & M Giving Fund
Harry Maisel
Marjorie and Maxwell Jospey
Foundation
Mercedes-Benz Financial Services
USA, LLC
Kathleen Mills
Thomas and Mary Ellen Murday
National Shrine of the Little Flower
Parish

Orchard United Methodist Church

Our Lady Of The Lakes Church -
Knights of Columbus #5436

Mary Jo and Paul Plante

Multi Drywall and Partition, LLC

Mark and Nancy Roualet

Sachse Construction

Robert and Cynthia Schmitt

Susan and David Scott Fund

Kathryn Schumacher and Johannes
Storm

Karen Schwarz-Davis

Patrick Slocumb

David Small

Jonathan and Jasmine Smart

St. Regis Roman Catholic Church

The Adray Foundation

The Mihalich Charitable Foundation

The Zip Foundation

Towne Mortgage Company

United Methodist Women
Birmingham

United Wholesale Mortgage, LLC

Wana Brands Foundation

Stephen Whitener

GIVING LEVEL

\$1,000 - \$2,499

Ahmed Al-Muraeb

Anderson, Eckstein & Westrick, Inc.

Timothy Baessler and Margaret Pierce

Theresa and Ken Banka

Mary and David Baumgarten

Eric Beehler

Behler-Young Company

Thomas and Kay Benesh

John Blanchard and Virginia Latimer

Dennis and Anita Blender

Lawrence and Nancy Bluth

David and Gloria Boddy

Marsha Boettger

Margaret and Robert Bogart

Anthony and Rosemary Boutt

Bright Side Dental Farmington Hills
PLLC

Thomas and Marilou Capo

Thomas and Macia Cardelli

Samantha and Shoba Chandra

Chase Plastic Service

Chemistry Salon

Joseph and Nancy Chrzanowski

City of Southfield

James and Spring Clarke

Clarkston Community Church

Club General Motors

Michael and Barb Collins

Kevin and Elizabeth Connolly

Harry Cook Charitable Fund

David Conrad

Jessica Conway

Keith and Candace Cooper

Michael and Janice Corrigan

Gregory A Coursen

Cunnington Family Foundation

Norma Jean Darr

Patrick and Sara Davis Charitable
Fund

Mark and Janet Davison

Ronald and Nadia DeLorme

Judith Ann Deutschman

Miles Doolittle

Frank and Carol Driscoll Gift Trust

John and Donna Dunn

Jenna and Samuel Englender

Juanita Evans

Elaine Fieldman

Fieldman Family Foundation

First United Methodist Church of
Birmingham

Flex-N-Gate

Four County Community Foundation

Virginia Fox

Theresa Fraley and Michael Schmidt

Christina Garwood

Joseph R. Gatz

James and Louise Gotch

Anthony and Elizabeth Gramer

David Griffs

John and Debbie Erb Family Fund

Christopher Guddeck

Randall and Patricia Gudme

Raymond Haden

David Hamel

Robert and Dolores Harris

Stan and Jan Harris

Mary Hemmeter

Henry Ford Rochester Hospital -
Medical Staff

Hertz Schram, P.C.

John and Sandra Holmes

Richard Honoway

Frances Hoopingarner

Mariana Hubbard

Alan and Kathy Huberty

Hybrid Design Services

Andrew and Elizabeth Isaacs

Islamic Association of Greater Detroit

Thomas and Sharon Jacob

Jessica's Natural Foods

Jimmy Choo

John C. Hendry Foundation

Jeffrey and Jennifer Jones

Ruth Jones

Judith & Bradley Schram Family
Foundation

Just Between Friends Oakland County

McCoy Family Giving Fund

Belinda and Armen Kabodian

Melvin and Geraldine Kaftan



Muhammad Karim
Bruce and Laura Kennedy
Gerd and Nancy Keuffel
Kienbaum Hardy Viviano Pelton & Forrest, PLC
Dale and Sue Kibourne
Lucy King
Robert and Lesli Kleber
Karen Knopper
Loren and Sherrie Konkus
Jerry and Sharon Knoppow
Michael and Jessica Korzin
Sandra Kott
Elizabeth and Steven Krause
Ladies Philoptochos Society St. George Greek Orthodox Church
Lake Trust Foundation
Eric and Candace Law
Richard and Shannon Lee
Sonja Lengnick and Mark Chutkow
Leo Burnett Detroit, LLC
Life Renewal Church
Lora Loche
Phyllis and Carl Look
Robyn and Andrew MacKenzie
Magna International
Manuel Rothenberg Memorial Fund
Rebecca Margavich
Jessica Marlatt
Margaret and Stephen Marsh
Carol Mason
Maureen and Robert Mayes
Daniel and Melisa McEnroe
Michele and Daniel McNary
Evelyn Micheletti
Michigan Coalition Against Homelessness
Eugene A. Miller and Louis A. Miller Fund
Mills Mechanical
Praveen and Shalini Modi
Julie Montie
Daniel Moons and Antoinette Pilzner
James Morton
Movement Search
Cynthia and Donald Myers
George and Laura Nagrant

Lesia and Kevin Nash
National Christian Foundation - Eastern Michigan
Richard and Kathy Nauer
Leroy and Mary Lou Nauert
Donald and Claire Neumann
North Congregational Church
Ronald Northrup
Jeffrey Nusbaum
Jo Elyn and George Nyman
Lori and William Oberlin
Richard F. O'Brien
Ann O'Dell
Kathleen O'Gorman
Kevin O'Shea
Chris and Paul Oster
John and Martha Pale
Laurine and John Parmely
Senator Gary Peters and Colleen Ochoa Peters
Lawrence D. Piotrowski
Jenny Poma and David Bammel
Ann Raftery
Carolyn Reeder
James and Rebecca Ricci
Jay and Faith Rick
William and Ellen Rieth
Robertson Brothers Company
Dean and Lynda Rocheleau
Jesse and Alyssa Rothermel
S & W Holdings
Leonard and Linda Sahn
Katherine and Nathan Saliga
The Samuel L. Westerman Foundation
William and Donna Sanders
Shelley Sapick
James Schachern
Steven and Mary Schneider
Robin Schwartz and Jonathan Goldstein
Matthew Seeterlin
Michael and Cynthia Sevilla
Susan Shandorf
Sheet Metal Workers Local 80
Donna Sheppard
Robert and Kathleen Skubic

Dan Smith and Michelle Olmsted
Susana Soler Miquel
Spark Foundation
Jacqui Spicer
Kevin Spizarny
St. John's Episcopal Church
St Mary Our Lady of the Snows
St. Stephen Episcopal Church
Amy and Joseph Stackhouse
Jason and Lynda Stanecki
Robert Stepan
Daniele Stewart Hanson
Tanja and Volker Straub Family Fund
Kim and James Suchara
John and Julie Sullivan
Eileen Taylor
The Unity Center Muslim Center Of Bloomfield Hills
Thomas Thoms
Cary and Eric Tilds
Sherry Toggeweiler
Jonathan Tozke
Vaccine Creative
Walmart Supercenter
Walsh Family Giving Fund
Kenneth and Marilyn Webster
Daniel and Michelle Weiss
Frank and Kathleen Wendt
Lewis Wilner Family Fund
Charles Wolfbauer and Mary Kay
Wolverine Freightliner-Eastside, Inc.
Anita Wood
Cathy and Gary Wood
Karen and Kim Zeile
Joe and Lori Zimmerman





GIVING LEVEL

\$500 - \$999

A Gershonowicz DDS & J Neme DDS, PC

Ally Financial

R. Soren and Wallis Anderson

Jeff Bagnasco

Mary Batchelor

Barbara Bieke

Steven Birnberg

William Boger

Richard and Cheryl Bowman

Mary and Patrick Boyhtari

Kambiz Bral

Mary Brand

Scott and Katrina Bratten

Gerald Burke

Timothy and Kandelle Brice

Bright Side Dental Bloomfield PLLC

Bright Side Dental Southfield PLLC

Bright Side St Clair Shores PLLC

Timothy Brown

Elizabeth Buckner

Gary Bueche

Audry Bujel

Ryan and Jennifer Bussone

Mary Lou Butcher and John Casey

Anne and Joseph Campbell

Lila and Clarence Chambers

Charities Aid Foundation of America

Christ Evangelical Lutheran Church

Steven and Sue Christophersen

Church of the Resurrection

Robert and Deborah Clark

Janet Coffing

Commerce United Methodist Women

Consumers Energy Foundation

Jessica and Brandon Cook

Jennifer and Jeffrey Cotaling

James Courter

Richard and Nancy Cowan

Clay and Cindy Cprek

Anne Craig and Michael Barger

Leslee and Paul Crowley

David and Denise Currin

William Curry

Alfred and Susan Darold

Sandra Dauch

Rachel Decker

Frederic and Mary Ellen Devendorf

Mary Ann DeYoung-Smith and Kevin Smith

Mary Alice Dooley

Anne Doran

Aylin Downey

Roquia Draper

Michele and Kevin Dubois

Raymond and Susan Ebbing

Ebeling Family Fund

Mary Elliott

James and Diana Elschoff Charitable Fund

Stephen and Judith Ernst

Jennifer Evans

Megan Fenkell

Christine and W. Brad Fields

First Spiritual Temple of Royal Oak

First United Methodist Church of Troy

Thomas and Irene Fleming

Jacalyn Foot

The Frank Family Fund

Rose Marie Frazer

Dominic Frigo

Norbert and Tamela Froeschke

Catherine Frost

Moyra and Bruce Garretson

Joseph and Sharon Gatz

Jon and Colleen Gentry

Mike and Kelly Gerlach

Anne Gilmartin

C. Robert Gladstone

Andrew Goldberg

Liza and Zachary Gordon

Anita Govender

Judith Graham

Great Lakes Cancer Management Specialists

Gary and Ann Green

Grace and David Greise

William and Donna Hacker

Amy and Mark Haimann

Margaret Hall

Remi and Leslie Hamel

Robert Harlow

Waymond Harris

Barbara Heller

Glenn and Judy Herron
Ryan and Katharina Hertz
Kerry Highbarger
Gary and Christa Hintz
Vickie and Harvey Hohauser
Deborah Anne Holton
James Hoogstra
Hope Lutheran Church
Timothy Houston
Gerald and Marcia Howe
The Huasman Charitable Giving Account
Maureen and Stephen Hudak
Addison and Deborah Igleheart
Elizabeth and Andrew Isaacs
Randy and Robin Jackson
Frank and Maureen Jerneycic
Carolyn Jones
Norman and Bonnie Kern
Dawn Kesler
Macy Kisilinsky
Knights of Columbus, Bishop Gallagher Assembly #0482
Knollenberg Hospitality, LLC
James and Jana Koch
Elizabeth Kohlenberg
Craig and Mary Kovach
Jeremy Kramer
Kroger Community Rewards
Michael Krueger and Kelli McConnell-Krueger
Saravanan Kuppusamy
Lahser High School
Tianhui Lan and Yuanlin Zhu
Carol Laursen
George and Carey Leaver
Aaron Leigh
Neil Levitt and Judith Bateman
Loomis Sayles
Paul Mallory
Ann and George Manning
Melissa Marria
Marx Buscemi Eisbrenner Group, LLC
Shannon Maurer
Martha and James Maxwell
Christopher and Ellen McBride

Bruce and Margaret McDermott
Lila Ann McMechan
Eric McPherson
Roderick and Kareene McPherson
Brian and Lisa Meer
John and Mildred Merz
Fara Messana
Cynthia Mickey
William Mierkiewicz
Milford Presbyterian Church
Katherine Miller
Sharon Miller
Mitcham Chapel AME Church
John and Carol Moore
Margaret Morrison
Thomas & Marceline Mudie
Mumford Family Charitable Fund
Munson Medical Center - Infomatics Department
Nativity Episcopal Church
Cynthia Nicholson
Northminster Presbyterian Church
Oakland University Kresge Library
David Oberholtzer
Kevin O'Donnell
OneDigital
Orchard Lake Community Church Presbyterian
Carmen Ormsby
Overhead Door Company
Overhead Door West Commerical, INC.
Helen and Pano Papalekas
Christine and Andrew Pasternak
Timothy Patrick
David and Linda Paul
Ted and Janet Payne

Michael and Helen Peters
Barbara Peterson
Kenneth and Elaine Peterson
Venus Phillips
Pilgrim Congregational Church
Mari and Keith Pine
William and Lauren Piontkowski
Roxanne Plater
Filocia and Vito Poma
Linda Popovic
Annis Pratt
Linda and James Pratt
Suzanne Regan
Betty Reilly
Evelyn Reinke
G. Richard and Margaret Rettof
Mary Riegle
Diane and David Ries
Susan Rieth
Susan Rokosz



Frances Rose
 Beth and Frederick Rosin
 Dorothy Rothgery
 Barry and Rochelle Rubin
 Robert and Mary Rucinski
 Bruce and Sandy Rule
 Kevin Sardiga
 Kelly Schroter
 James and Sheila Scovic
 Shady Beach Subdivision
 Richard and Teresa Shaieb
 R. Alan Sheets
 Monisha Shetty
 Lori Shoha
 Mary Siden
 Signature Associates
 Brian Sliwinski
 Todd Smit
 Kevin Smith
 Nicholas Smith
 Mary Anne Smyth
 Minal and Mehul Sonigra
 Robert and Jane Sparks
 St. Andrew's Society of Detroit
 Benevolence
 St. Mary of the Hills
 David Steffes
 Bruce Stevens
 Christopher and Anita Stoddard

Thomas and Arlene Stone
 Kelly and Bradley Stern
 Tavel Family Fund
 Lynn Taylor
 Rebecca Tetreau
 The Kendall Group
 Joseph and Margaret Thilman
 Carla Thomas
 Charles Throm
 TMP Architecture
 Michael Toutant and Susan Brochert
 Carolyn and Robert Treharne
 Trinity Episcopal Church
 Triumph Rehabilitation
 United Way Of Greater Cincinnati
 Robert and Amy Vrahoretis
 VT SEVA Detroit
 Leslie Walsh
 Stanley Weiner
 Michelle Weiss
 Joan Wells
 Gregg Williams and Aleida Rivera-Williams
 Lynn Wilton and Mark Miller
 Ramona Winarski
 Woodside Bible Church - Rochester
 Morchie Yang
 YourCause
 Beth Zaborney
 Julianne Zahler
 James Zeman

GIVING LEVEL

\$250 - \$499

Actemium Detroit
 Michael Alberts
 Patrick Allen
 Catherine Anderson and William Wegert
 David and Sandra Anderson
 Richard Anderson
 Jennifer Andreou
 Shirley Anthony
 Anthony and Gretchen Arnold
 John and Margaret Arthurs
 Nancy and James Artinian
 James and Mary Axle
 Eugenia and Roger Bajorek
 Ava Barbour
 David and Julie Barker
 Susan Barnowski
 David and Ulla Bartlo
 Michael and Patricia Baskin
 Robert Bertolin
 Albert and Josephine Beste
 Bethany Pentecost Tabernacle
 Kanta Bhambhani and Yaddanapudi Ravindranath
 Big Beaver United Methodist
 Laura Biggs
 Thomas and Pam Bills
 John and Kimberly Birmingham
 Loretta Biskner
 JoAnn Bolek
 Scott Boone
 Eric Bowden
 John Boyda
 William and Laura Brickley
 Bright Side Dental Canton PLLC
 Bright Side Dental Livonia PLLC
 Bright Side Dental Warren PLLC
 Bruce Brorby
 James Brueck
 Nenner Buckhaultner
 Kathleen Bunge
 Sally Burns



Richard and Beverly Buzinski
 Ashley Carpenter
 James and Perry Carroll
 Carvell Giving Fund
 Thaddeus Chmielewski
 City Of Birmingham
 Clariance Technologies
 Curtis Clariett and Patricia Esselman-Clariett
 William and Gwendolyn Clark
 Joseph Collins
 Suzanne Colucci
 Catherine Compton
 Paul and Renee Comstock
 Jamey and Melissa Condevaux
 Congregation Beth Ahm
 Clare Conklin
 Erin and Brian Considine
 Jennie and William Cook
 Harry Cook Charitable Fund
 Stanley Cordell
 Patricia Corkery
 Constance and Ronald Corrigan
 Ronald and Carol Cousineau
 David Cox
 Richard and Jean Cox
 Richard and Mariann Cramer
 Patrick Dailey
 Wendeli Dailey
 John and Susan Dankovich
 Barbara DeGrazia
 Terence and Mary Desmond
 Dianne Dickelmann
 Kimberly Dicks
 Brian Dietz and Debra Meier
 Melissa Dodoro
 Jeanne Dolson and Michael Yocum
 Michael and Chizuko Donovan
 Paula and Christopher Dow
 John and Shirley Drauer
 Suneel and Franz Dsouza
 Envision Health

Randy and Sherie Eschels
 Executech Staffing , LLC
 Mary Fairchild
 Marcy Fisher
 Audrey Forbush
 Sal Forman
 Michele and Brian Fox
 Twila Frazier
 Reida Gardiner
 Jon and Alison Gaudreau
 Hope Gekiere
 General Motors - Global Electrical & SDV Team
 Paul and Mary Glantz
 Matthew and Dawn Godfrey
 Jeffrey and Linda Golding
 Jennifer Goulah
 Gary Graff
 Steven and Marilyn Grant
 Kevin and Tina Gray
 Great Lakes MSO, LLC
 Glen Greenleaf
 Alan Gregory
 Mary Griffo
 Michael and Laura Grove
 William and Patricia Guarino
 Susan Guenther and William Eisenman
 Shina Gupta
 Gregory and Lisa Gustafson
 GXO Logistics
 Richard Hahn and Diane Flynn-Hahn

Amanda Halaboustier
 Jane Hamp
 Jeffrey Harris
 Anna Headbloom
 Clark Heath
 Fred and Carol Lee Hehl
 Gregory Heleski
 Judith Helm
 John Hensien
 Kathleen Hidingier
 Gretchen Hirsch
 Elizabeth Holland
 Holy Spirit Lutheran Church
 Roger and Carol Hope
 Hope United Methodist Church
 Lori Hosler
 Humana
 Cindy and Jerrold Jones
 Charles and Julie Karbginsky
 Richard and Patricia Karlewski



Catherine Karol
Susan Keat
Richard and Betsy Keidan
Halima Khan
Kashmira Kharas
Young Shin and Hyoung-Jae Kim
Martha Klein
Knights of Columbus, Council #13483
Michele and Michael Knoblauch
Janet Kolenda
Patricia Korsog and Kenneth Simpson
Karen Krieger
William and Jean Kroger
Taryn and Nick Kuzatko
Michael and Mary Beth LaRose
Suzanne and Eugene Leich
Rosemary and David Leonard
Raymond Litwinowicz and Cynthia
Hampel-Litwinowicz
Virginia Long
Adelle Lund
Scot and Rebecca Lund
David Lussier
Elizabeth Luther
John J. Lynch III and Anne H. Hiemstra
Foundation
Brian and Marti Mackowski
Irma Macy
Magna Seating
Mark and Kathleen Maisonneuve
Daniel Mannes
Mary Markstrom

Beth Martin
Christine Mason Soneral
Martha Mast
MasterCard Matching Gift Program
Max Broock Realtors, Inc.
Mayer Creative Productions Inc.
Cary McGehee
Daniel and Susan McGraw
Timothy McGraw
Shaun McGuire
Christine McKenna
Meadowbrook Christian Church
Linda Meints Giving Fund
Gregory and Mary Melega
Carla Merriwether
Steven and Mary Jane Michaels
Mary and John Millis
Daniel Minkus
Janet and James Montgomery
Patrick and Karen Moore
Michael and Catherine Morris
William and Nadine Mott
Charles Stewart Mott Foundation
Marie and Patrick Murray
Mary Myers
Henry and Nancy Nabors
Rabbi David and Alicia Nelson
Paolo and Carla Nervo
Ellen Noone and Michael Eustice
Northcoast Wealth Management
Kenneth and Jenny Nothaft
Madeline O'Neill
Gordon Orear

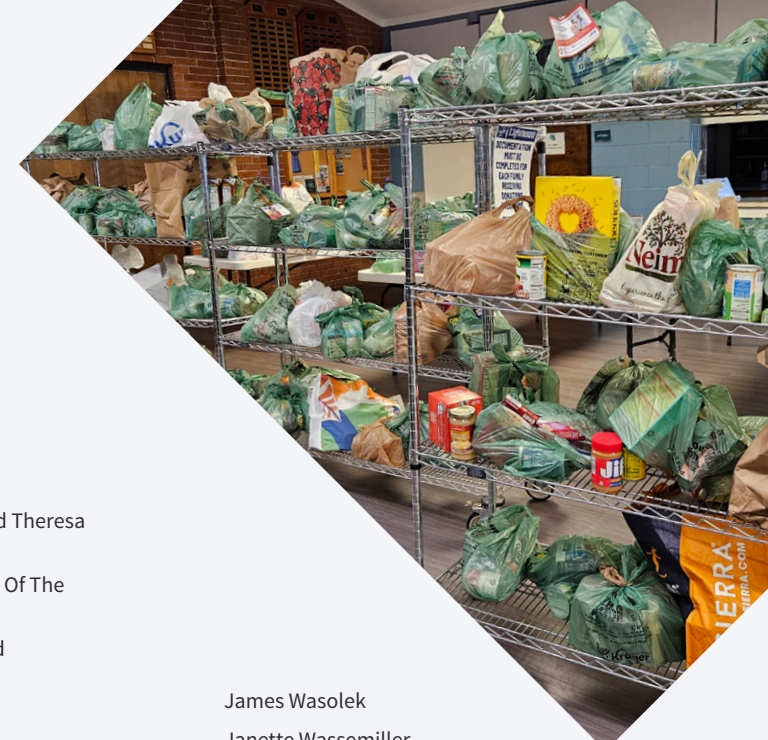
Our Lady of Refuge
Suzanne Ozinga
Richard and Kitty Pagac
Johannes Palm
Donald Paquette
Jacques and Karen Pasquier
Eric and Connie Pelton
John Penney
Wilfredo Perez
Patricia Perkoski
Mary Perreault
Eric Peterson
Christine and Don Phillips
Ronald and Carla Pierik
Michael Pitts
Brother Louis Plourde
Janine Polewarczyk
Daniel and Kimberleigh Pozdol
Carolyn Price
David and Cynthia Price
Pro-Shield Sealant Contractors LLC
Brenda Quinlan
Michael Raad
Claudia Rast
Kathryn Reid Charitable Fund
Arthur and Judith Reinhold
Scott Reynolds





Miriam Rhein
David and Yolanda Richter
Aleida Rivera-Williams and Gregg Williams
Roeper City & Country School
Daryl Rollins
Shron Rosenberg
Rex Rosenhaus
Helen Rossi
Mary Rossio
Rotary Club of Pontiac Charities
Richard and Elaine Rudy
Dan Rustmann
Nancy Ruzsala
William and Patricia Ryan
Susan Sadley
Sanctuary of Birmingham
Roger and Dana Saylor
David Scarchilli
John Schaffer
Richard and Collen Schmerheim
Jon and Shareen Schmidt
Shirley Schmidt
Norman and Margaret Schmidt
Julie and Robert Schram
Michael Schwartz
Nicole Schwartz
Kenneth Searcy
Dennis and Isabelle Seipke
Jerry and Claudia Self
Thomas Selman
Servants Entrance Community
Julie Silver
Lee Silver
Lori Simoes
Christopher Sislock
William Sloan
Thomas and Carol Smist
James and Mary Ann Smith
Julian and Frances Smith

Mark Smith
William Solomonson and Theresa Lesperance
Sovereign Military Order Of The Temple Jerusalem Inc.
St. Patricks Mission Fund
Robert Stawarz
Ann Steglich
Glen and Colleen Steyer Family Fund
Mary Stone
Adam Strauss
Margaret Strickland
David and Ann Strubler
Thomas Tallerico
Audrey Tedford
Martha and David Teeter
The Souper Bowl Of Caring Inc.
Francis and Judy Thibodeau
Total Administrative Services - Combined Federal Campaign
G. William and Caroline Trapp
Chris Trebilcock
Troy Women's Charitable Association
Tricia and Paul Trulik
Tara Tuomaala and Michael Honner
United Way SW Pennsylvania
Thomas and Nancy Vandegrift
Paul and R. Anne Vandenheede
Ronals and Gerri Vandermolen
Tracy VanSumeren
Jo Ann Viinkiainen
Claude Vinegar
Anthony and Mary Vrbensky
Paul and Annette Walker
Jan and Karen Wampuszyc
Emily and Richard Warchuck



James Wasolek
Janette Wassemiller
Linda Watson
Teresa and Paul Wehrwein
Steve and Karen Weiss
Donna and James Williams
George and Kimberly Williams
James and Linda Wilson
Sheila and Randy Wilson
Jane and John Winterbottom
Susan Winters
Thomas and Colleen Wreesman
Susan and Robert Yashinsky
Michael Yatsko
Andrew and Helaine Zack
Helen Zakrzewski
Lois Zeidman
Joseph and Lorri Zimmerman
Karl Zimmermann
William and Kelly Zimmer





248-920-6000
www.lighthousemi.org

 @LighthouseMI

 @LighthouseMichigan

 @LighthouseMI

Be the reason
a family finds hope.
Support Lighthouse's mission
by becoming a volunteer,
advocate or donor.

contact@lighthousemi.org
248-920-600

MISSION

Lighthouse endeavors to build equitable communities that alleviate poverty in partnership with and in service to individuals, families, and organizations.

LIGHTHOUSE CORE VALUES

Compassion
Collaboration

Equity
Innovation

Advocacy
Stewardship

